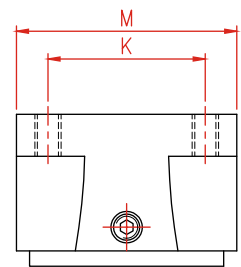
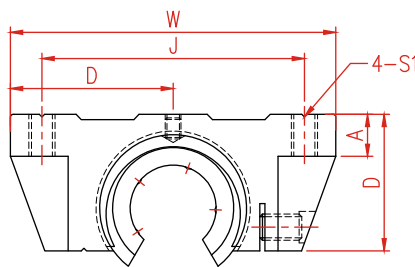
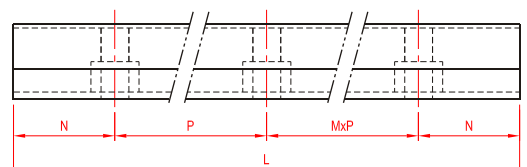
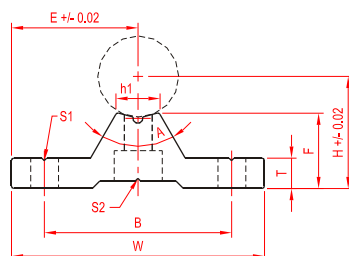


Modelo	Dimensiones (mm)							Largo max. (mm)
	D	A	B	P	E	P/2	P	
TBR 16 S	16	M5 x 0.8P	12	150	6	75	150	3000
TBR 20 S	20	M6 x 1.0P	16	150	7.8	75	150	3000
TBR 25 S	25	M6 x 1.0P	20	200	7.8	100	200	3000
TBR 30 S	30	M8 x 1.25P	25	200	8.5	100	200	3000
TBR 35 S	35	M8 x 1.25P	30	200	8.5	100	200	3000



Modelo de unidad soporte	Diámetro de barra	Dimensiones (mm)									Casquillos deslizantes		
		W	G	A	M	S1	J	K	E	h	Designación	Índice de cargas básicas	
												Dinámicas C (N)	Estáticas Co (N)
TBR16UU	Φ16	62	26	8	42	M5	50	60	31	18	LM16UUOP	392	490
TBR20UU	Φ20	68	31	10	51	M6	54	70	34	21	LM20UUOP	784	1176
TBR25UU	Φ25	82	41	12	65	M8	65	100	41	28	LM25UUOP	1568	2352
TBR30UU	Φ30	91	48	12	75	M8	75	110	45.5	33.5	LM30UUOP	1764	2940



Modelo de soporte	Diám. de barra	Dimensiones (mm)								Dimensiones de montaje					Peso (kg)
		H	E	W	L	F	T	h1	θ	B	N	MxP	S1	S2	
STBR16-600	16	22.14	25	50	600	15	6	8	50°	37	75	3x150	5.5	M5	0.660
STBR20-600	20	29.01	27.5	55	600	19.7	8	8	50°	40	75	3x150	5.5	M6	0.985
STBR25-600	25	32	32.5	65	600	20	10	8	50°	45	100	2x200	6.5	M6	1.275
STBR30-600	30	36.52	37.5	75	600	22.3	12	10.3	60°	55	100	2x200	6.5	M8	1.701